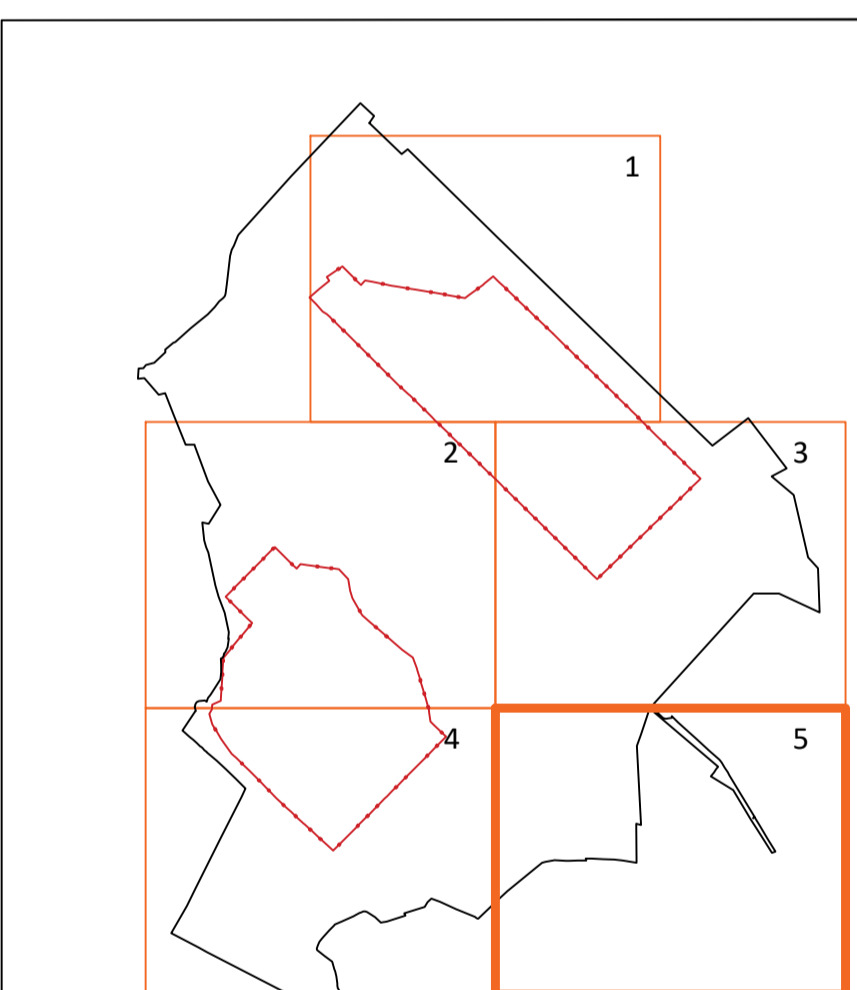


Legend	
	PV TABLE
	EXISTING ACCESS ROAD TO BE UPGRADED
	NEW ACCESS ROAD
	BRIDGE OVER DRAIN WITH ACCESS ROAD
	INVERTER STATION AND CONCRETE PAD
	INVERTER HARDSTANDING AREA
	DEER FENCE
	BRIDGING STRUCTURE OVER DRAIN FOR THE DEER FENCE CROSSING
	ACCESS GATES
	SHEEP FENCE (AROUND DRAINS)
	PEAT STORAGE AREA
	SUBSTATION AREA
	TEMPORARY COMPOUND AREA
	SWITCHBOARD (NORTH SIDE)
	80.6m ACCESS TRACK LEVEL
	EXISTING FIELD DRAIN
	FIELD DITCH BUFFER 20 M
	EXTENSION TO EXISTING FIELD DRAIN
	CLEAN WATER CUT-OFF DRAIN
	SEDIMENT LADEN DRAIN
	SETTLEMENT POND
	CLEAN WATER CUT-OFF DRAIN OUTFALL
	PROPOSED CULVERT
	CROSSING CULVERT
	COLLECTOR DRAIN
	COLLECTOR DRAIN FLOW PATH
	CONNECTOR DRAIN
	FLOW RESTRICTOR
	OVERFLOW DRAIN
	OVERFLOW DRAIN FLOW PATH
	BUND DEWATERING SYSTEM AND OIL SEPERATOR (SEE NOTE 9)



KEY PLAN

DRAINAGE DESIGN NOTES

- ALL DRAINAGE SUBJECT TO MICRO-SITING AND OPTIMISATION ON SITE.
- LOCATIONS OF COLLECTOR DRAINS, CHECK DAMS, CULVERTS, SWALES, SETTLEMENT PONDS AND BUFFERED OUTFALLS/LEVEL SPREADERS ARE SHOWN AS INDICATIVE AND MAY BE CHANGED TO SUIT THE REQUIREMENTS OF THE LOCAL TOPOGRAPHY.
- DOWN GRADIENT SLOPE BELOW BUFFERED OUTFALL/LEVEL SPREADER ONTO WHICH WATER WILL DISSIPATE TO HAVE A GRADE <6%.
- SUPERVISING HYDROLOGIST OR ENVIRONMENTAL CLERK OF WORKS / ENVIRONMENTAL SCIENTIST TO OVERSEE INSTALLATION OF DRAINAGE FEATURES.
- ALL DRAINAGE FEATURES SUBJECT TO INSPECTION & MAINTENANCE PLAN.
- EROSION PROTECTION TO PREVENT SCOUR TO BE PROVIDED IN DRAINAGE CHANNELS WITH A CHANGE IN DIRECTION <130°, WHERE THE FALL EXCEEDS 1:40 AND AT ALL ROAD CROSSING CULVERT LOCATIONS, OR WHERE OTHERWISE DIRECTED BY THE SITE ENGINEER.
- CONSTRUCTION PROCESSES THAT POSE RISK OF ACTIVATION OF SEDIMENT LADEN RUN-OFF TO BE HALTED DURING PERIODS OF EXTREME RAINFALL. NO EXCAVATION TO BE CARRIED OUT IN ADVANCE OF FORECASTED HEAVY RAINFALL.
- MINIMISE STOCKPILING OF MATERIAL AND LOCATE ESSENTIAL STOCKPILES OUTSIDE BUFFER ZONES AND AS FAR AWAY AS POSSIBLE FROM WATERCOURSES.
- "ENTEXOL SCS001" OR SIMILAR APPROVED OIL SENSITIVE BUND DEWATERING SYSTEM (1 L/S WITH LOW SHEAR VORTEX PUMP WITH OIL SENSITIVE DETECTION. "ENTEXOL SCS002" OR SIMILAR APPROVED INTEGRATED CLASS 1 FULL RETENTION OIL SEPARATOR WITH INDEPENDENT CERTIFICATION OF COMPLIANCE TO BS EN 858

0	13/06/18	ISSUED FOR PLANNING	TOR	RMG	DC	AD			
REV	DATE	REVISION DESCRIPTION	DRN	PROD	VER	APP			

© COPYRIGHT © ESB INTERNATIONAL LIMITED  
ALL RIGHTS RESERVED. NO PART OF THIS WORK MAY BE MODIFIED, REPRODUCED OR COPIED IN ANY FORM OR BY ANY MEANS - GRAPHIC, ELECTRONIC OR MECHANICAL, INCLUDING PHOTOCOPIING, RECORDING, TAPING OR USED FOR ANY PURPOSE OTHER THAN ITS DESIGNATED PURPOSE, WITHOUT THE WRITTEN PERMISSION OF ESB ENGINEERING & FACILITY MANAGEMENT LTD. TRADING AS ESB INTERNATIONAL.

PURPOSE OF ISSUE - PRELIMINARY UNLESS INDICATED  
 CLIENT APPROVAL  PLANNING  TENDER  CONSTRUCTION  AS-BUILT

CLIENT  
**ESB WIND DEVELOPMENT LTD  
 AND BORD NA MONA POWERGEN LTD**

PROJECT  
**TIMAHOE NORTH SOLAR PROJECT**

CONTRACT

DRAWING TITLE  
**DRAINAGE LAYOUT  
 SHEET 5 OF 5**

PRODUCTION UNIT  
**CIVIL & ENVIRONMENTAL ENGINEERING**

I:\CAD Director\001 - AutoCAD Standard Objects\Support\Airport\_2017\_1\app\ESB Title Blocks AD A1 L P.dwg

DRAWN	PRODUCED	VERIFIED	APPROVED	APPROVAL DATE
T O'Rourke	R McGowan	D. Cody	A. Downey	13/06/2018
CLIENT REF	NO. OF SHTS	SIZE	SCALE	
	1	A1	1:2500	

DRAWING NUMBER  
**QS-000218-01-D453-020**